

Center for Instructional Technology and Training

# Dreamweaver 2

# Dreamweaver 2 Manual

## Contents

- Dreamweaver 2 ..... 1
- Creating and Formatting a New Document ..... 3
- Defining a New site ..... 3
- Creating the new page..... 3
- Code view, Split view, Design View ..... 4
- Format the header text ..... 5
- Create a navigation list..... 5
- Adding links to the list items ..... 6
- Adding Styles Using Dreamweaver ..... 7
- Creating a new style sheet and style ..... 7

# Creating and Formatting a New Document

## Defining a New site

To define a new site, select **Site > New Site** from the menu.

Click the **Advanced** Tab

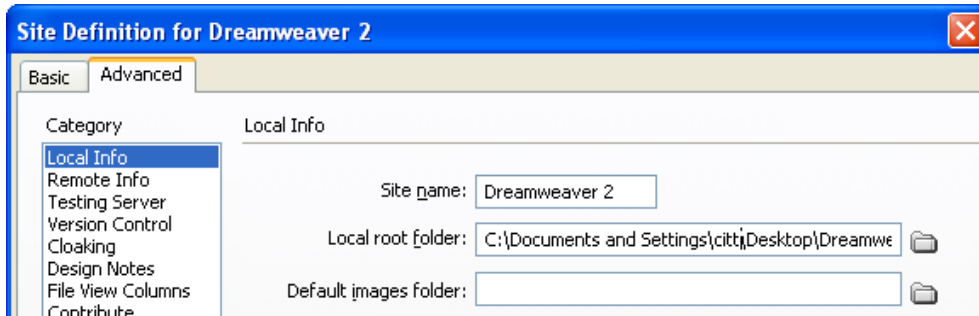


Figure 1: Site Definition

For the Site name, type **Dreamweaver 2**.

For the Local root folder, click the folder icon to the right of the field. Browse to your desktop **Dreamweaver 2** folder and double-click it. Click the **Select** button to choose it.

Click **OK**, to close the Site Definition window.

The list of files and folders will now appear in the **Files** panel (If you don't see the panel, click Window > Files or F8).



Figure 2: Files panel

## Creating the new page

Create a new file, by choosing **File > New** from the menu. Make sure **Blank Page** is selected and that the DocType is **XHTML 1.0 Transitional**.

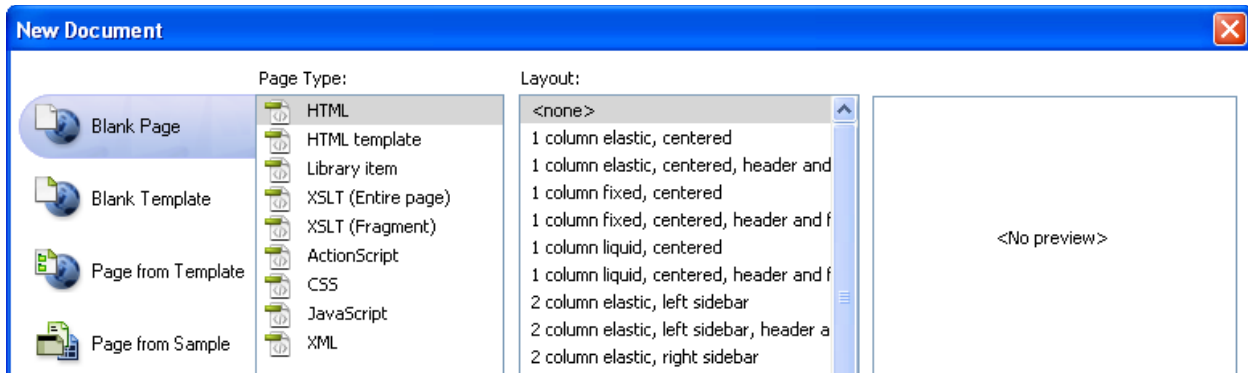


Figure 3: New Document

Click the **Create** button to get a blank page.

Choose **File > Save As** from the menu and name the file **index.html**.

Now open the **index.txt** file in the **content** folder.

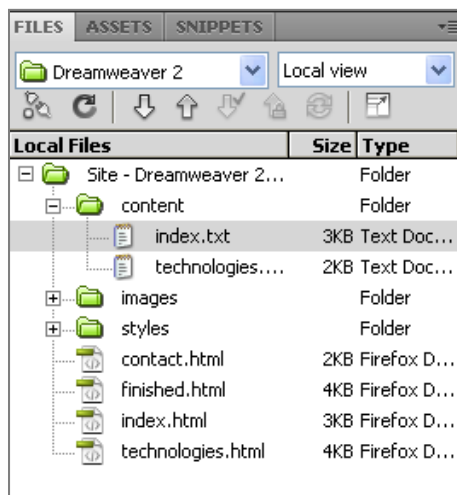


Figure 4: Index.txt selected in the Files panel

Copy all the text of this file and paste it into the new **index.html** document. (Hint: Notice the tabs for open documents at the top of the workspace.)

## Code view, Split view, Design View

Now click the **Code** button at the top of the workspace. This shows you just the HTML.

Now click the **Split** button. This shows you both the Design view (WYSIWYG) and the Code view at the same time. (Hint: you can adjust the height of these views by dragging the bar between them)

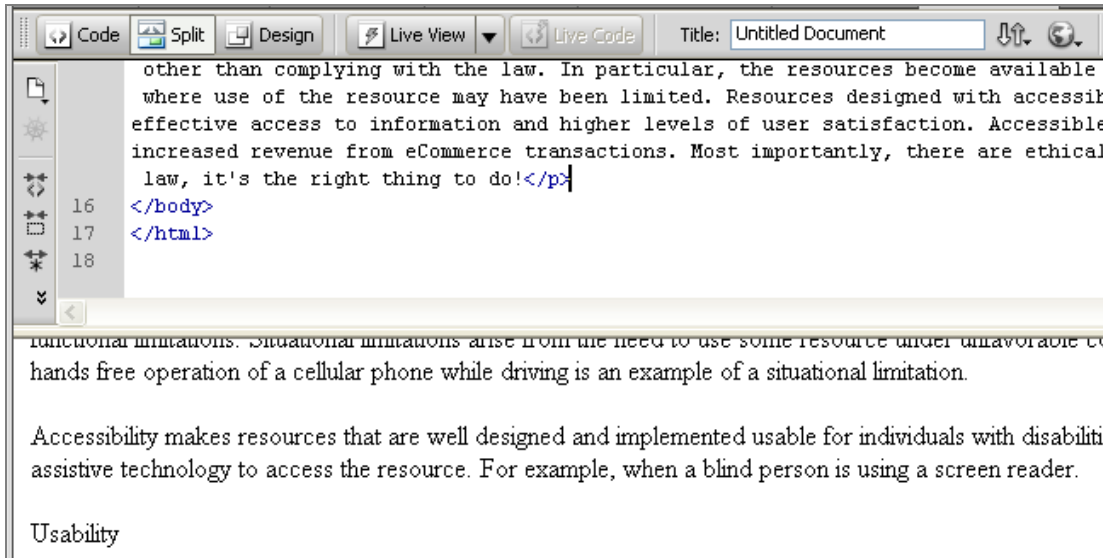


Figure 5: Split View in Dreamweaver

In the Title field in the document toolbar, type **Dreamweaver 2 Class**, then press **Enter**. Notice that the text in between the <title> tags changes.

## Format the header text

To make the **Accessibility** text into a header, select the text and find the **Format** dropdown list in the **Properties** box. Change the format from **Paragraph** to **Heading 1** from the list.

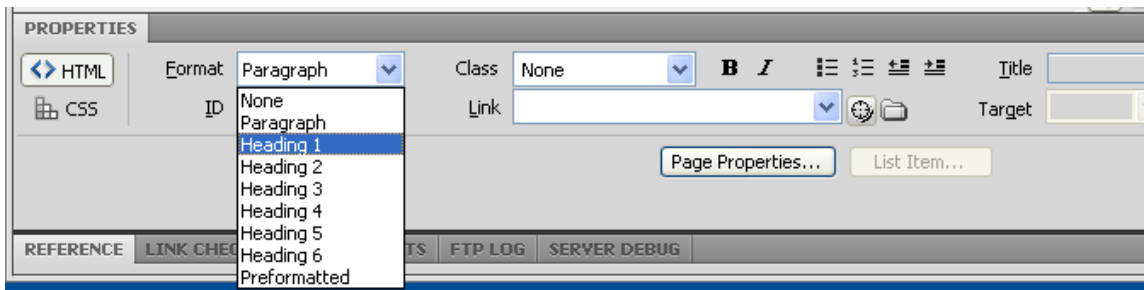


Figure 6: Changing the format in the Properties

Change the format of **Usability** and **Why Consider Accessibility?** from paragraph to **Heading 2**. Notice the change in the code.

## Create a navigation list

Place your cursor after the **Accessibility** heading and press **Enter** to make a new line. Type in the following, each on a new line: **Home**, **Technologies**, **Contact**.

Select the three lines and click the bulleted list icon in the **Properties** to create a list.

# Accessibility

- Home
- Assistive Technologies
- Contact

Accessibility is the ability to use a product (service or system) under limiting conditions resulting in a barrier to use. Barriers can be physical or mental (cognitive) and are usually associated to individuals with disabilities.

Figure 7: Bulleted list items

## Adding links to the list items

Now create links for each item by selecting the text. In the **Properties**, type in the filename or browse for the appropriate files by clicking on the folder icon.

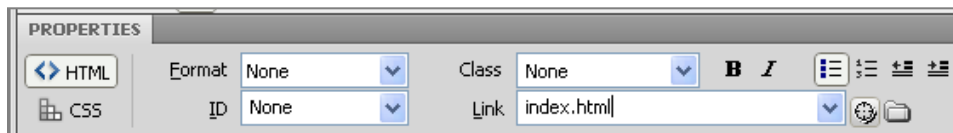


Figure 8: Adding a link in the Properties

## Adding Styles Using Dreamweaver

In the panel area to the right of the document space and above the **Files** panel, find the panel named **CSS Styles** and double-click it to expand it. (If it's not visible, select **Window > CSS Styles** from the menu, or Shift+F11)

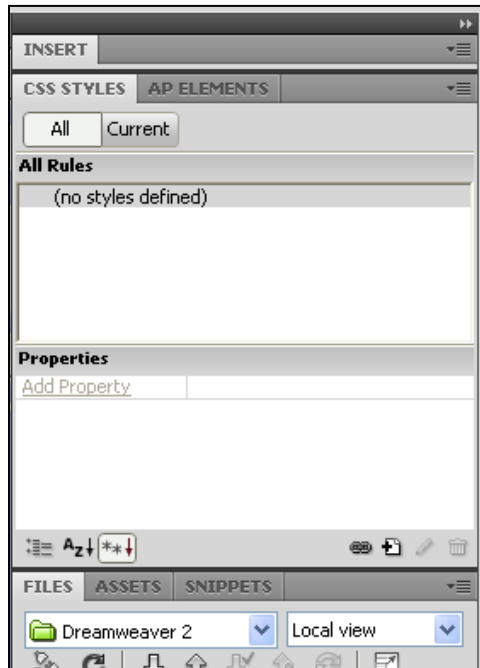


Figure 9: CSS Styles

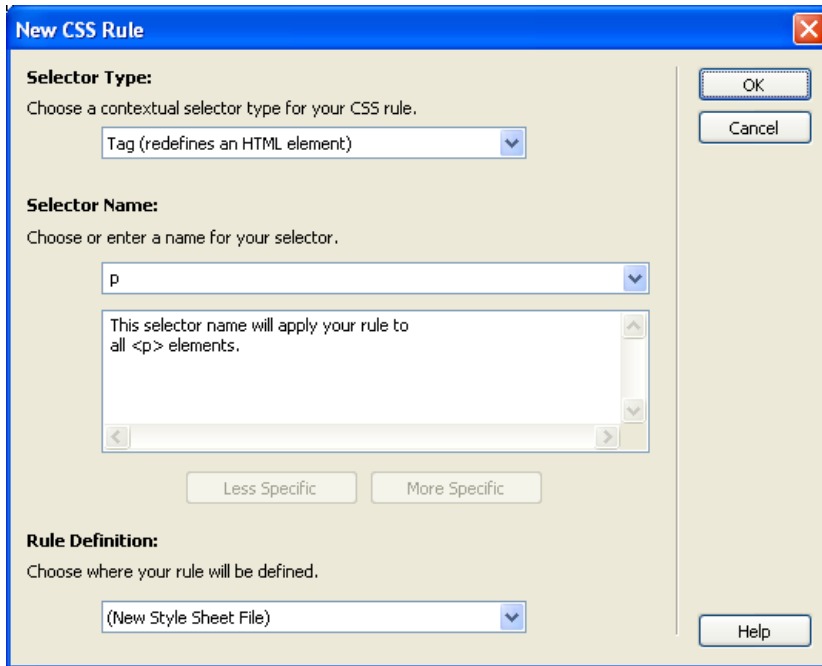
### Creating a new style sheet and style

At the bottom of the **CSS Styles** panel, find the **New CSS Rule** icon. 

For Selector Type, choose **Tag (redefines an HTML element)**

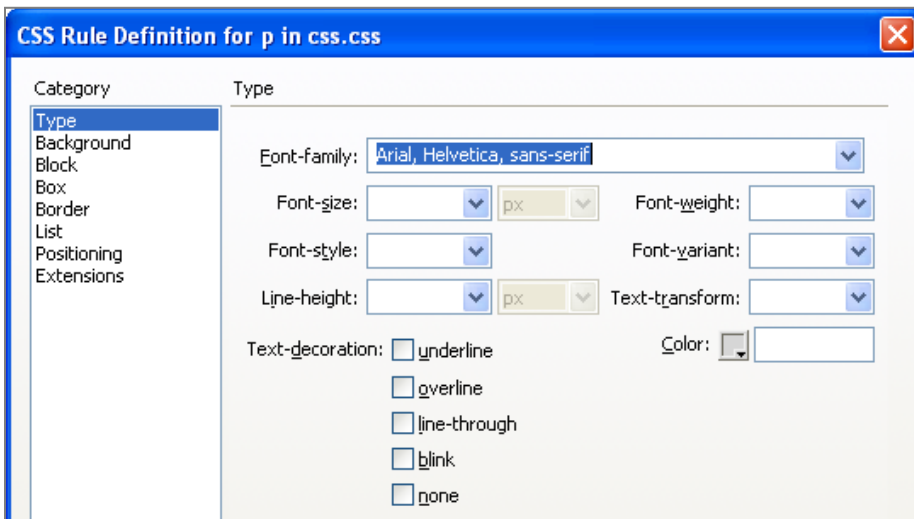
For the Selector Name, type or select **p** from the list.

For the Rule Definition, choose **(New Style Sheet File)** since this is the first style. (Hint: you only need to create one style sheet file for your site.)



Click **OK**.

In the Save window, double-click the styles folder and then name the new style sheet file **styles.css**. Click the **Save** button.



In the CSS Rule Definition window, for font-family choose **Arial, Helvetica, sans-serif**.

Click **Apply** to see the changes. Click **OK** when finished. You should see the font and size of each paragraph has changed and that there is a new **styles.css** file in the styles folder in the **Files** panel.

1. Double-click the **styles.css** file in the **Files** panel to open it. (Hint: A complete CSS Reference is available under **Help > Reference**)
2. Replace the CSS selector **p {** with **p, h1 {** then save the **style.css** document. Switch back to the **index.html** document and you'll now see that all the paragraphs and the heading1 text has changed font.
3. To make all the text in the document the same font, go to the CSS Styles panel and click select the style under styles.css. Next, click the delete icon to delete the style.
4. Click the **New CSS Rule**, icon and this time type or select **body** as the Selector Name. Make sure that **styles.css** is selected for the Rule Definition.
5. In the CSS Rule Definition window,
  - a. For the font-family, choose **Arial,Helvetica,sans-serif**
  - b. For the font-size, type in **85%**. (Note: The default size in many browsers is 12pt)
  - c. For the line-height, type in **110%**.
6. Click **Apply** to see the changes. Click **OK** when finished. Now all the elements within the body tag are the same font. This is the cascading function of CSS. Nested elements inherit the styles of their parents.
7. Click the **New CSS Rule**, icon and this time type or select **p** as the Selector Name. Make sure that **styles.css** is selected for the Rule Definition.
8. For the paragraph tag, in the CSS Rule Definition window,
  - a. For the font-size, type in **85%**. (Note: The default size in many browsers is 12pt)
  - b. For the line-height, type in **110%**.
9. Click the paragraph style under styles.css in the CSS Styles panel. Right-click and select Duplicate. Type in **li** for the Selector Name. Now all the list items have the same font size.
10. Now add a style for the first paragraph. Click the **New CSS Rule**, icon and this time for the Selector Type, choose **Class (can apply to any HTML element)**. For the Selector Name, type in **firstpara**. Click **OK**. (Hint: make class names that describe how the class should be used, not just its function.)
11. Change the color (anything but blue), font-style, and font-weight. Click **OK**. (Hint: Apply won't do anything yet)
12. Go back to the document and select the first paragraph of the page. In the **Properties**, find the **Class** field and change **None** to **firstpara**. Now you'll see the changes. Find another paragraph and repeat this.
13. To change links, style the link states. Add a **New CSS Rule**, and this time choose **Compound (based on your selection)** for the Selector Type. Choose **a:link** for the Selector Name. Click **OK**.
14. In the CSS Rule Definition window,
  - a. For font-weight, choose **bold**.
  - b. For the color, choose a bright orange or type **#F60**.